



GEARHEADS(POWERFUL TYPE) Frame size 90mm sq. (3.54 in. sq.)

BALL BEARING TYPE

▶ **RATED TORQUE OF GEARHEAD**

MODEL	Speed(rpm)		500	300	200	120	100	60	50	30	20	15	10	6	5	3	2	1
	Ratio	Speed	50Hz	5	7.5	12.5	15	25	30	50	75	100	150	250	300	500	750	1500
L9VK□B L9WK□B L9V10D(DECIMAL)	High	kg-cm	14.6	24.3	36.5	54.8	65.7	99.0	118.8	198.0	200	200	200	200	200	200	200	200
		Low	5.6	9.3	14.0	21.0	25.2	38.0	45.5	75.9	101.8	135.7	200	200	200	200	200	200
	High	N-m	1.43	2.38	3.57	5.37	6.44	9.70	11.64	19.40	19.60	19.60	19.60	19.60	19.60	19.60	19.60	19.60
		Low	0.55	0.91	1.37	2.06	2.47	3.72	4.46	7.44	9.97	13.30	19.60	19.60	19.60	19.60	19.60	19.60
	High	oz-in	202	337	506	760	912	1375	1650	2750	2777	2777	2777	2777	2777	2777	2777	2777
		Low	78	129	194	291	350	527	632	1054	1413	1884	2777	2777	2777	2777	2777	2777

- * The normal torque is that the motor and gearhead are directly coupled.
- * Insert the denominator of reduction ratio in □ of gearhead model name.
- * Actual rotation speed is 2-15% less than synchronous speed.
- * ■ Color indicates that the rotation of gearhead shaft is in opposite direction as output shaft of motor.

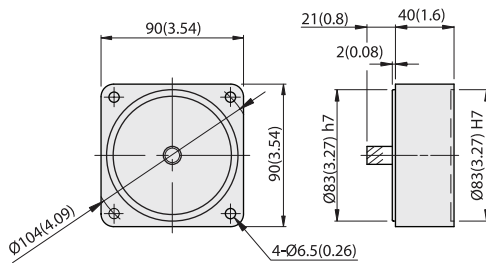
With Decimal Gearhead

DIMENSIONS

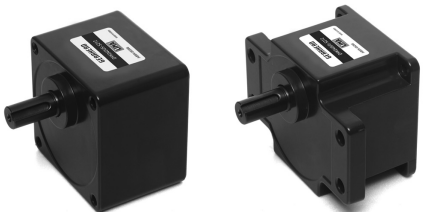
Unit : mm(inch)

DECIMAL GEARHEAD

L9V10D

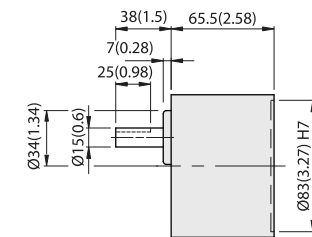


WEIGHT 0.6kg (1.3 lb)

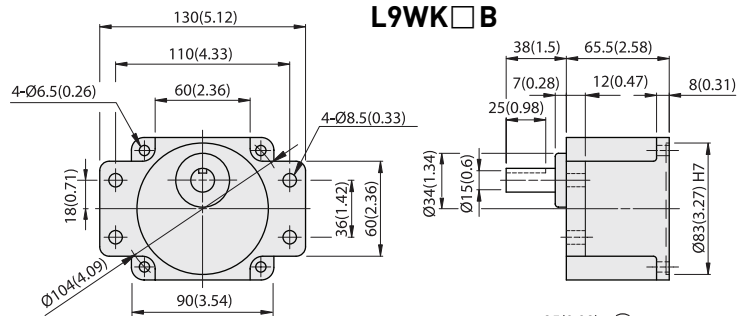


GEARHEAD

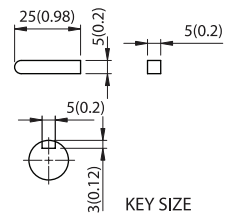
L9VK□B



L9WK□B

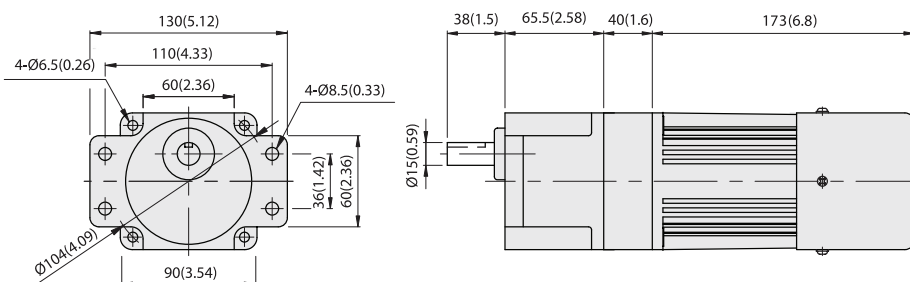


MODEL	GEAR RATIO	WEIGHT		BOLT
		kg	lb	
L9VK□B	1/3~1/200	1.5	3.3	M6x95
L9WK□B	1/3~1/200	1.6	3.5	M6xL25



KEY SIZE

L9WK□B + L9V10D + L9190P□HT





GEARHEADS(ULTRA POWERFUL TYPE) Frame size 90mm sq. (3.54 in. sq.)

BALL BEARING TYPE

▶ **RATED TORQUE OF GEARHEAD**

MODEL	Speed(rpm)		500	300	200	120	100	60	50	30	20	15	10	6	5	3	2	1	
	Ratio	Speed	50Hz	3	5	7.5	12.5	15	25	30	50	75	100	150	250	300	500	750	1500
L9UK□B L9V10D(DECIMAL)		High	kg-cm	14.6	24.3	36.5	54.8	65.7	99.0	118.8	198.0	265.5	300	300	300	300	300	300	300
		Low	kg-cm	5.6	9.3	14.0	21.0	25.2	38.0	45.5	75.9	101.8	135.7	203.6	300	300	300	300	300
		High	N-m	1.43	2.38	3.57	5.37	6.44	9.70	11.64	19.40	26.02	29.40	29.40	29.40	29.40	29.40	29.40	29.40
		Low	N-m	0.55	0.91	1.37	2.06	2.47	3.72	4.46	7.44	9.97	13.30	19.95	29.40	29.40	29.40	29.40	29.40
		High	oz-in	202	337	506	760	912	1375	1650	2750	3687	4166	4166	4166	4166	4166	4166	4166
		Low	oz-in	78	129	194	291	350	527	632	1054	1413	1884	2827	4166	4166	4166	4166	4166

- * The normal torque is that the motor and gearhead are directly coupled.
- * Insert the denominator of reduction ratio in □ of gearhead model name.
- * Actual rotation speed is 2~15% less than synchronous speed.
- * ■Color indicates that the rotation of gearhead shaft is in opposite direction as output shaft of motor.

With Decimal Gearhead

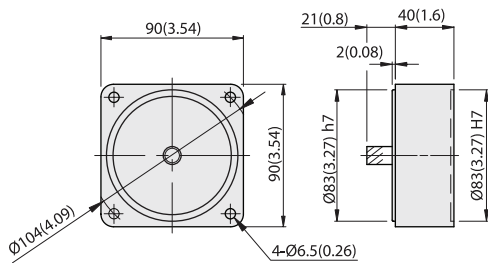
SPEED CONTROL
INDUCTION MOTORS

DIMENSIONS

Unit : mm(inch)

DECIMAL GEARHEAD

L9V10D

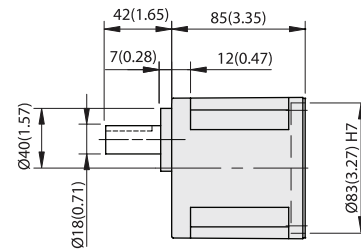
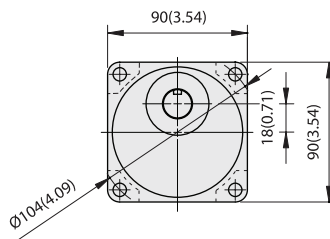


WEIGHT 0.6kg (1.3 lb)

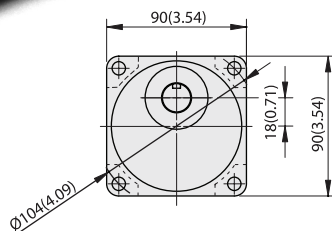
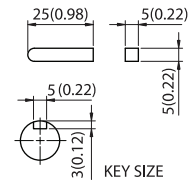


GEARHEAD

L9UK□B



MODEL	GEAR RATIO	WEIGHT		BOLT
		kg	lb	
L9UK□B	1/3~1/200	1.95	4.3	M6xL20



L9UK□B + L9I90P□HT

